

November 25, 2019

FEA Not To Miss Simulations

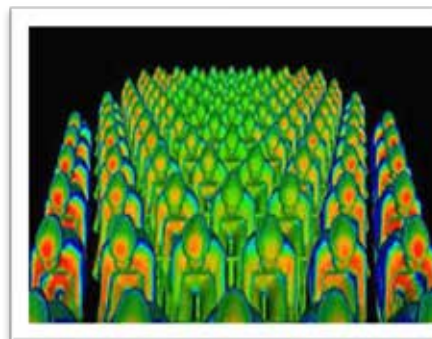
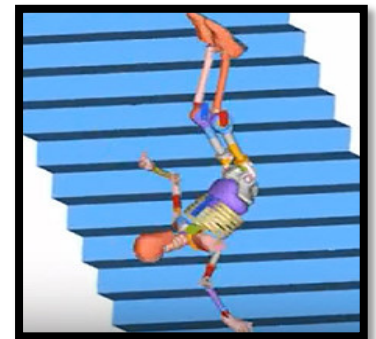
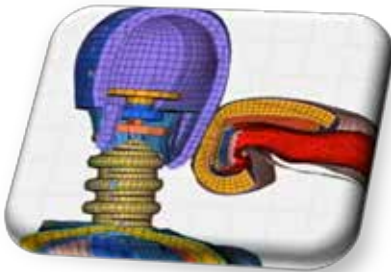
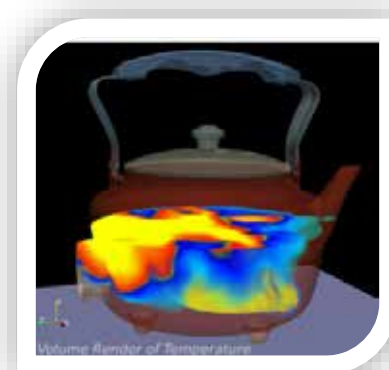
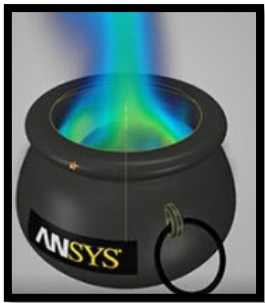
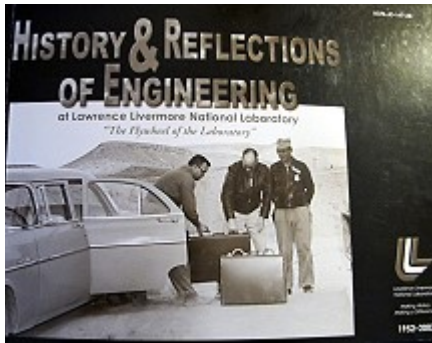
[www.feantm.com](http://www.feantm.com)

Engineers

Simulations & Tutorials

On

YouTube



# Table of Contents of Past Featured Simulations

## FEA Not To Miss

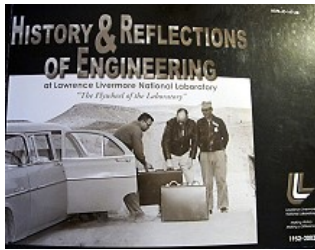
### Friends Making A Difference in Simulations

Date	
11/25	LLNL - Art Shapiro - MDG - History & Reflections
11/18	Electric Kettle simulation using LS-DYNA
11/11	Witch's Cauldron in ANSYS Discovery
11/04	Seismic nonlinear dynamic analysis of one story industrial building
10/21	Drone
10/14	Hot Extrusion
10/07	Lego Crash 2019
09/23	LS-DYNA CFD simulation of the GMC Camaro model
09/16	Collision between two football players.
09/09	Simulation of glass falling to the floor in the LS-DYNA
09/02	Thermal part of welding simplest simulation in LS-DYNA
08/26	LS-DYNA SPH : Bird strike on rotor fan
08/19	Meteorite impact with LS-DYNA
08/12	Ajei Gopal, on future of self-driving cars
July	Machining process of drilling
May	Simulation LS-DYNA with Intrusion concrete barriers
April	Hybrid 3 Crash Test Dummy Falling downstairs
March	LS-DYNA bullet impact on steel plate
February	Boxing glove foam simulation, side punch -LS-DYNA
January	Marko Thiele - LEGO car crash
	The Largest CFD Simulation Reveals the Complex Aerodynamic Interactions in a Peloton



## Watching what you missed

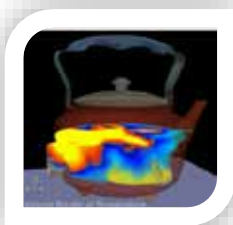
Plus past favorites.  
Apples are their favorite,  
I explained to them that's not relevant.



11/25/2019 And a walk down memory lane. From Art Shapiro, on LLNL's 50<sup>th</sup> Anniversary. A really great article from the developer of the software code TOPAZ.

[Article pdf](#)

**Monday 11/18/2019** Yes, I wish it was a coffee kettle. As we all know I'm not a tea drinker, BUT maybe I can heat coffee up in it and pretend I'm a tea drinker? Then we can rename it Coffee Kettle Simulation!



[Electric Kettle simulation using LS-DYNA](#)



**Monday 11/11/2019** - Okay, I can hear the buzz in the room on today's simulation that it was in the email blog. BUT, it's a cauldron and I didn't have it on this site! AND I want one for the coffee shop to stir a new flavor! So, today we're having my great new Cauldron Cocoa Coffee with Cauldron Chocolate Chips. (notice all the C's) [Witch's Cauldron in ANSYS Discovery?](#)



**Monday 11/04/2019** - And if you're having our delicious coffee with a hint of collapsing vanilla, you don't want to drink it in the below industrial building! GO to the nice park, or library or come visit the ranch to drink it! [Seismic nonlinear dynamic analysis of one story industrial building](#)

## OCTOBER

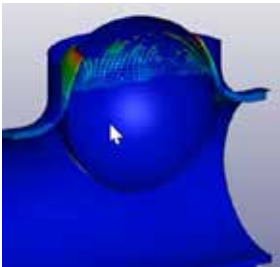


**Monday 10/28/2019** - Thanks to SCALE and DYNAmore for our coffee flavor Lego Crash with a hint of mint (or bumper, or roof cave?) Anyway, below is [Lego Crash Simulation vs. Reality](#) so click on the link and let's watch CRASH, but my to go cups never crushed and saved the coffee!



**Monday 10/21/2019** - Drone Delivery Coffee right to your front door! I love drones, but it would spook my horses so no coffee to go cups delivered to any horse facilities.

[Simulating Drones for Deliveries](#)



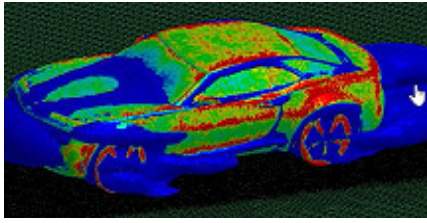
**Monday 10/14/2019** - This week is hot extrusion coffee. This week is also new pdf on Guests page AND on the Past Week page, so it is not so long to scroll. AND the 13th was my birthday! Happy Birthday to meeeeeee! [feaanswer@aol.com](mailto:feaanswer@aol.com) - yes I expect to hear from all of youuuuuu

[LS-DYNA hot extrusion](#)

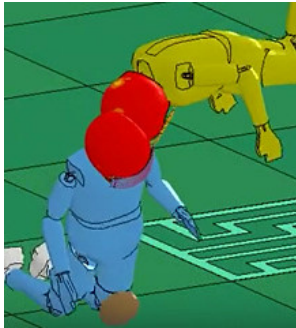


**Monday 10/07/2019** - Okay, NO place would be safe for my to go coffee cups for below simulation. BUT we sooooo love Lego Crash cars by DYNAmore/SCALE. What flavor you ask? Crash Chocolate with a dash of bumper vanilla. Ouch!

[Lego Crash 2019](#)

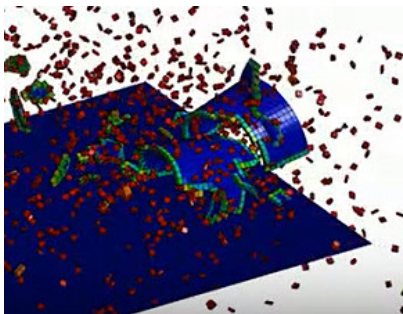


09/23/2019 - CAR time! Who was that person that owned a 1969 Camaro? Who parked the car facing away from the movie at the Drive In Theaters? My brother owned a 442 and I had a baby blue Impala, SO who owned that Camaro? And with a Camaro to go cup - ZOOOOM Camaro time! [LS-DYNA CFD simulation of the GMC Camaro model](#)



09/16/2019 - Not only did they crash their heads, drop the football, and probably have a heck of a headache BUT they dropped the coffee! How rude to ruin my Football To Go Cups! [a proof-of-concept collision between two football players.](#)

Monday 09/09/2019 Below is why I don't use glass coffee cups. SPLAT and what a waste of my coffee! Of course they are prettier then paper and you do save a tree not using paper BUT the fallout? NOPE, you get a paper to go cup with your Vanilla Mocha Cinammon Coffee and off to YouTube we go!



[Simulation of glass falling to the floor in the LS-DYNA](#)

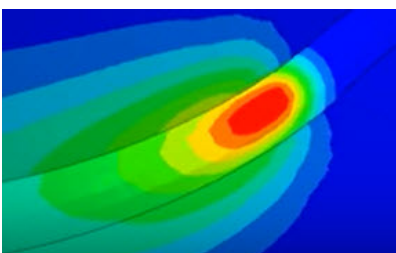
The use of the method Peridynamic in LS-DYNA. Drop height 0.1, 1, 2, 10 meters.

Monday 09/02/2019

Below is Thermal by Yuri Novozilov. Which reminds me WHERE is Art Shapiro, you ask? Retired and OH yes, Art is my brother so I know where he is. WHAT? You never knew I'm related to Art! Now, if you need to contact him you can write to [feaanswer@aol.com](mailto:feaanswer@aol.com) and just make the subject line Give to Art so he knows it's his. I am trying to get him back here to blog!

Now for below, we shall grab our to go cups and watch some of Yury's simulations - he has quite a few.

GO Yuri! [Thermal part of welding simplest simulation in LS-DYNA](#) - Yury Novozilov





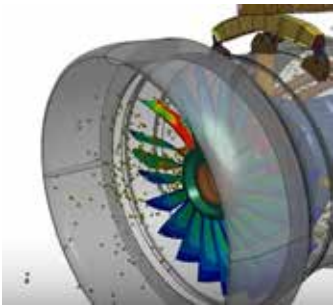
---

Monday 08/26/2019 And it's plane week!

First - Where NOT to stand talking to your friend! Airport Runway? Ya think? This was to good not to share! Luckily they left their coffee at my shop. I'll send it to the hospital, in my new Runway To Go Cups! Then at the same airport, but a different runway, a bird goes splat! UGH! What is with the airport this week!



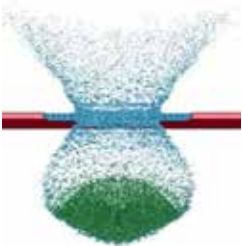
### [Crash Test Dummy](#)



### [LS-DYNA SPH : Bird strike on rotor fan](#)

**Bird Strike on Ti-6Al-4V Fan Blades using SPH.**

Monday 08/19/2019 Meteorite Coffee! It has a certain crashing flavor, of course also vanilla or it isn't my coffee. So let's grab our To Go Cups and run over (to burn calories) to YouTube.



### [meteorite impact with LS-DYNA](#)

---

Monday 08/12/2019 [Ajei Gopal](#) - What do electric cars and a GREAT tie have in common? I really like both of them, AND if you missed it, here is [Ajei Gopal, on future of self-driving cars and coffee](#) (I lied, no coffee is mentioned)

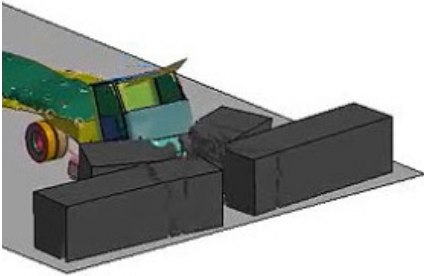
**JULY** I was going to use a drill to stir today's coffee. But, Ramesh from Kaizenat (your LS-DYNA distributor in India) would rather use the drill in a simulation. I have to agree SO back to the mixer for the coffee specialty for today. Coffee with mixed in Vanilla, Cinammon AND of course no calories!! The calories fall out using the mixer!



[With the use of Simulation technology machining process of drilling have been analyzed and have shown the reliable results.](#)

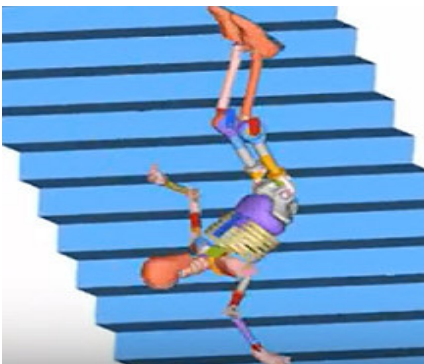
Kaizenat Support

**May** - Welcome to an older particular favorite flavor, our Italian Specialty Corrado Espresso. Sipping our coffee, let's head over to YouTube. There we'll find the simulation from EnginSoft, Italy and hang on to that coffee cup, if you're driving the truck in this simulation!

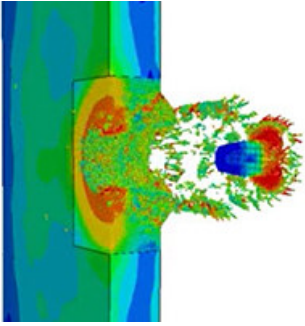


[Simulation LS-DYNA with Intrusion concrete barriers](#)

**April** - Mystery 1 - If you were holding a cup of coffee in this simulation, you wouldn't be holding it at the bottom of the stairs. It's also a murder mystery. The poor Hybrid is pushed down the stairs being hit by a pole. Someone, obviously, wanted his coffee!

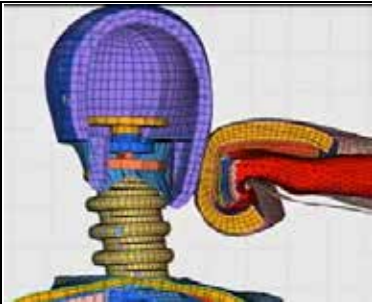


[Hybrid 3 Crash Test Dummy Falling downstairs](#)



**March** - And welcome to Coffee and the shooting range. NOPE, we do not waste coffee so we are not shooting the coffee cups! So, let's head on over to YouTube and use a steel plate for those bullets, WHILE drinking the coffee from our cups! No coffee shooting allowed.

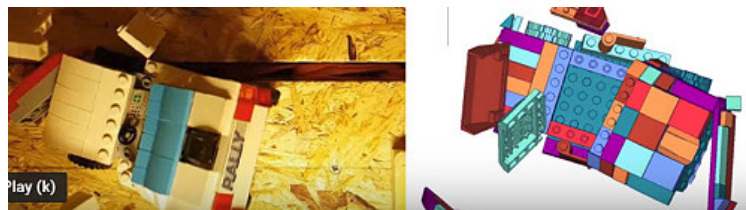
[LS-DYNA bullet impact on steel plate](#)



**February** - At times I may want to punch something but I would NEVER do it holding my coffee cup! SO, I shall call this weeks coffee flavor Cafe-Mocha-You-Better-Duck

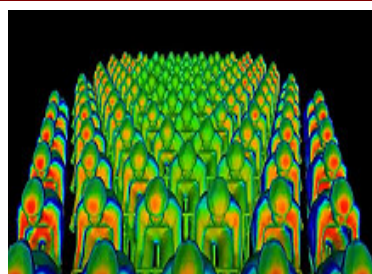
[Boxing glove foam simulation, side punch -LS-DYNA](#)

**January** We are pleased to announce our addition of International Coffee/Treats. So, climb aboard the FEANTM bus as we ride to YouTube, serving Kaffe Marko, a Knoppers Wafer AND you get a set of leggo's! See below and you will find your reason for the leggos! But the coffee/wafer? New menu item!



[Marko Thiele - LEGO car crash](#) against 25% offset barrier with 17km/h

12/31/2018 - HAPPY New Year and of course my resolution is diet, and biking AND speaking of biking, do you know how many Mocha Au Collins I had to make for a Peloton simulation? A LOT! And all had no spill lids - SO this weeks special is "No Spill, Mocha Au Collins" - a chocolate flavored, no spill, ready for simulation to go cup of coffee!



[The Largest CFD Simulation Reveals the Complex Aerodynamic Interactions in a Peloton](#)

Running ANSYS Fluent computational fluid dynamics (CFD) software